

DOT PEEN, MARKING  
AND TRACEABILITY  
SOLUTIONS



**PORTABLE RANGE**

# OUR EXPERTISE OUR MARKETS

## Traceability and identification

Marking parts for identification purposes is essential in all industrial sectors.

- Counting the number of parts produced
- Optimising recall campaigns
- Complying with standards in the country of origin
- Identifying the compliance and condition of products

Traceability has been a focus for Technifor since our invention of micro-percussion marking machines in 1981. Since then, many manufacturing industries use our machines and solutions to carry out their critical marking needs, permanently etching Gravotech as a leading brand.

“

In our sector, the secret to long-term success is innovation and development of new solutions and applications.

”



## DPM: DIRECT PART MARKING

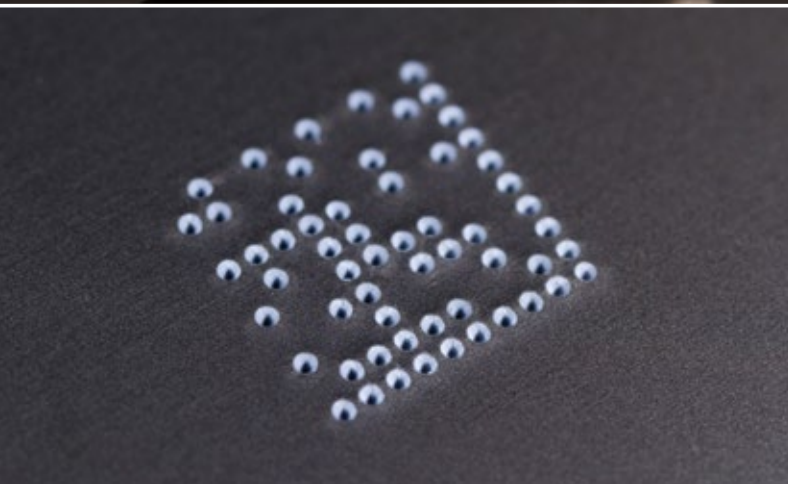
DPM (Direct Part Marking) is one of the most durable marking techniques, which makes it particularly suited to industrial parts subjected to difficult conditions: high temperatures, pressure, friction, painting, and more.

Direct Part Marking produces marks that are:

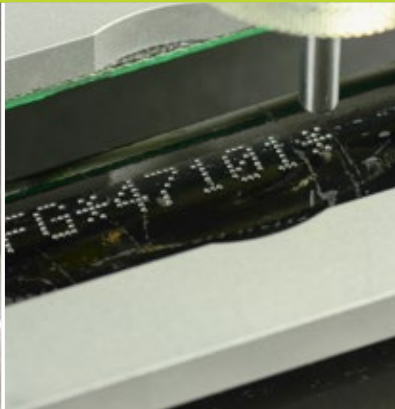
- Permanent
- Deep
- Legible

## DATAMATRIX

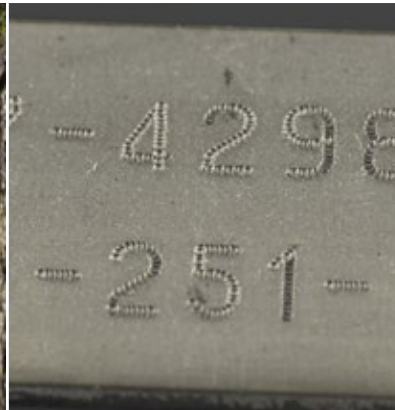
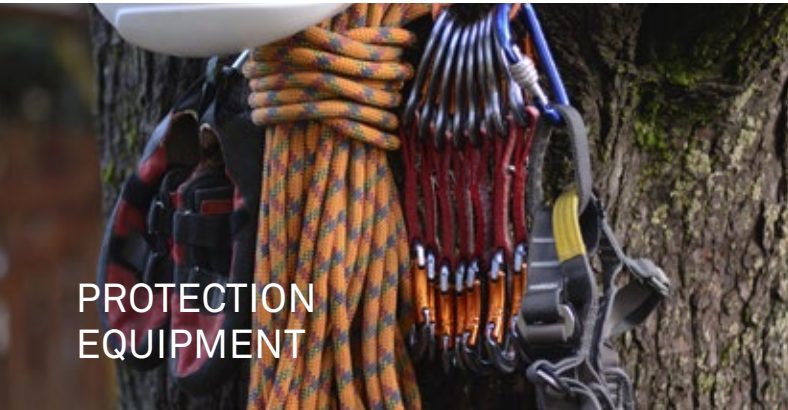
Datamatrix is a very popular marking technology comprised of contrast coloured dots arranged in a square or rectangle. They are used to encode a large amount of information in a simple 2D symbol. Used by a majority of industrial sectors, it is readable by a camera and without risk of error. Unlike other barcodes, its sturdiness makes reading possible even when the code is partially damaged.



# APPLICATIONS



MOTORBIKES  
AND BICYCLES



MORE TECHNIFOR  
APPLICATIONS



# DOT PEEN SOLUTION XE320CP

PNEUMATIC DOT PEEN



## ERGONOMIC

The XE320cp is one of the lightest, portable machines on the market: weighing just under 6 pounds, user comfort is guaranteed. Access to hard-to-reach zones is simplified and the illuminated marking zone guarantees the user accurate part identification. The handles and marking trigger were ergonomically designed to work with the most complex parts.



## TOUGH

Technifor has proven expertise in the dot peen sector, as it developed it. Designed with solid and resistant materials, the lightweight design does not hinder the effectiveness of the permanent mark. The mechanics of the XE320Cp make it suitable during use for a clean and accurate result.



## COST-EFFICIENT

This machine has a range of standard features such as 2 USB ports, 1 RJ45 port, Ethernet, PN22 stylus and more. All these features make it one of the most affordable and equipped machines in its category.

# TECHNICAL SPECIFICATIONS

## XE320CP

Weight & dimensions	5.95 lbs - 9.09" x 3.89" x 6.73"
Marking area	1.96" x 0.78"
Power supply	Universal: 110-230 V AC
Character height	0.019" x 1.77"
Fonts	Continuous line or point-by-point/Unicode
Marking type	Timestamping, counter, shift code, logos, etc.
Communication	Ethernet, RS232, 2USB Dedicated or general inputs/outputs
Included	PN22 marking stylus LED lighting for the marking zone T05 management software integrated into the UC300 Gravotrace PC software for Windows can be downloaded for free at <a href="http://gravotrace.technifor.com">gravotrace.technifor.com</a>
Personalisation of the station with a range of options	Range of styluses and tips 3D stylus Column frame Adaptable bases (on request)

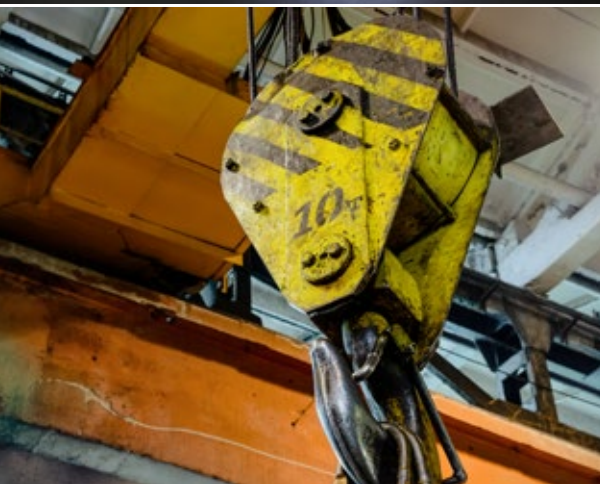


## THE + PRODUCT... ITS HANDLING

The shape of the XE320 Cp is one of its key strengths. Specifically designed to meet the needs of customers, it includes:

- A handle on each side
- An adjustable top strap for easy handling
- A directly accessible control button

User-oriented, this portable marking machine stands out from others machines thanks to its convenience.



## FOCUS ON... HANDLING SYSTEMS

Handling and lifting systems are subject to strict regulations. Each part must be identified and the marking must be accessible and remain legible over time, despite the conditions:

- Outdoors
- Dusty environments
- Humid environments

The range of parts to be marked requires an adjustable and versatile machine.

# DOT PEEN SOLUTION XM700

ELECTROMAGNETIC DOT PEEN



## DEEP MARKING

This industrial marking gun is recommended for deep marking on even the hardest surfaces. Suited for marking the most cumbersome parts and resistant to tough working environments such as industrial workshops. Its shape facilitates marking on vertical or sloping surfaces.



## 100% MOBILE

Completely autonomous, the XM700 requires no cables or external keyboard: the control unit is integrated into the machine. The XM700 can be attached to a battery belt to eliminate space restrictions.



## CONNECTED

The XM700 has broad connectivity including data exchange with existing systems (database). Connected directly to a barcode scanner, it has immediate reading capabilities. The gun has several USB inlets and an Ethernet port for added connectivity.

# TECHNICAL SPECIFICATIONS

## XM700

Weight & dimensions	410.91 lbs - 12.8" x 8.3" x 16.06"
Marking area	3.14" x 1.18"
Power supply	Universal : 110-240 V AC
Character height	0.06" x 1.1"
Fonts	Point-by-point/Unicode
Marking type	Timestamping, counter, shift code, logos, etc.
Communication	Ethernet, RS232, 2USB Dedicated or general inputs/outputs
Included	M2S stylus Integrated T07 management software Gravotrace PC software for Windows can be downloaded for free
Personalisation of the station with a range of options	<ul style="list-style-type: none"><li>- Range of styluses and tips</li><li>- Transport case</li><li>- LED lighting for the marking zone</li><li>- Magnetic base</li><li>- Protective film for the screen</li><li>- Column mount</li><li>- Battery belt</li></ul>



## THE + PRODUCT...TOUCH N'MARK

The XM700 marking gun has a large integrated touchscreen. Its intuitive icon interface provides direct access to all functions using your finger, a stylus, and even while wearing a glove. Mark each product individually, save your settings, and access your database.



## FOCUS ON... THE OIL INDUSTRY

The oil industry requires very deep marking resistant to outside onslaught. This industry is specifically subject to monitoring and quality controls; the marking must be very high quality and durable. It is also difficult to access large parts requiring marking such as tubes, valves, pumps. Technifor's range of portable electromagnetic machines is perfectly suited to the issues relating to heavy industries.

# ABOUT GRAVOTECH

Gravotech is the global leader in cutting, engraving, scribing and permanent marking solutions for the personalisation, signage and traceability sectors. The group has two main brands: Gravograph and Technifor. Gravotech is the reference supplier of laser and mechanical machines and materials for cutting, engraving and scribing applications. Technifor specialises in dot peen, scribing and permanent laser marking machines intended for traceability.

Gravotech's head office is in Lyon, France; it operates three manufacturing sites and provides solutions via 21 subsidiaries and 300 distributors in over 100 countries, employing 920 people worldwide.

Additional information on the group, its products and services is available on our websites: [www.gravotech.com](http://www.gravotech.com), [www.gravograph.com](http://www.gravograph.com) and [www.technifor.com](http://www.technifor.com).

“ The user is the focus of our solutions: simplicity and effectiveness have been the keywords of this concept. Identification and traceability have never been so easy. ”

*Gérard Guyard - CEO*



The head office in Rillieux-la-Pape



The manufacturing workshop in La Chapelle-Saint-Luc (France)



## CONTACT US

TEL : +44.(0)1926.884.433

[sales@ltd.technifor.com](mailto:sales@ltd.technifor.com)

[www.technifor.com](http://www.technifor.com)



**Gravograph Ltd**  
Unit 3, Trojan Business Centre  
Tachbrook Park Drive  
Leamington Spa  
CV34 6RS

